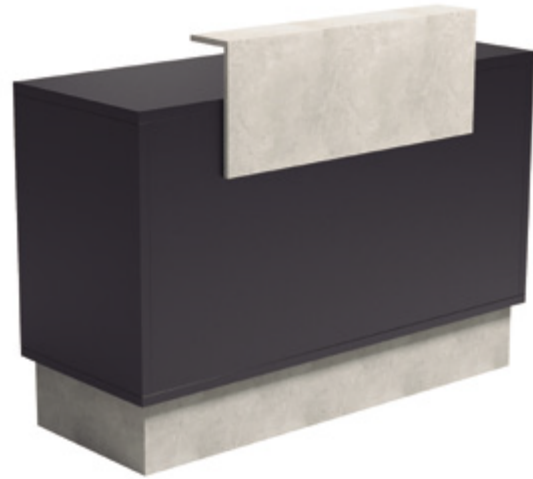


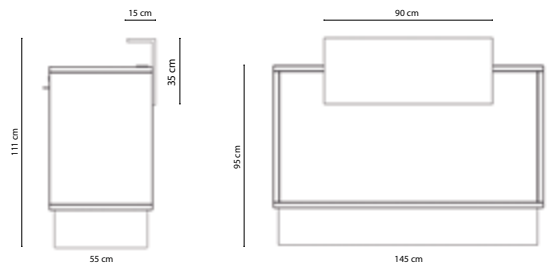
THIERRY

Reception



FEATURES

- Manufactured in high density chipboard, covered with melamine on both 2 sides
- Drawer with lock and key
- PVC rounded edges
- Removable keyboard tray
- Cable grommet
- Grey marbled effect scratch resistant front bezel and base



COLOR   CERAMIC

WEIGHT 99Kg

VOLUME 0,35m³

BOX
 A_ 94cm x 61cm x 7cm
 B_ 189cm x 61cm x 7cm
 C_ 85cm x 54cm x 8cm
 D_ 87cm x 87cm x 3cm
 E_ 62cm x 40cm x 17cm