

Tina: Hairdressing chair

Tina, simply functional, with sweet lines and decided make it the perfect work chair for all salons that need professional equipment.

Practical and resistant. The upholstered cushions of the seat and back, supported by curved beech woods, which offer a comfortable seat and armrests in painted cast aluminium, with polyurethane over-armrests, are a perfect combination of comfort and durability over time.

ARTICLES

All Luca Rossini chairs are available with pump with brake and five-star, round or square base.

In addition, chairs are also available with star, round or square black base and chromed pump with brake.



IN PHOTO: MULBERRY N4 AND SAGE GREEN N6

Le immagini sono fornite al solo scopo illustrativo e non costituiscono elemento contrattuale



Colour:



All Luca Rossini products are available in a wide choice of colours at no extra cost!



All Luca Rossini products are available in a wide choice of colours at no extra cost!



champagne 10



black coffee 59



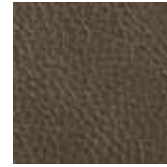
hot chocolate 60



milk 61



tea 62



cappuccino 63



espresso 64



light grey G5



dark grey G6



olive G8



royal blue G9



marine L2



chocolate milk K3



strawberry milk K4



gold K6



vintage brown F5



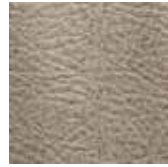
vintage black G1



vintage tan G2



vintage white G3



vintage ash G4



vintage chocolate
H9



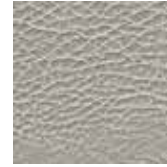
vintage grey K1



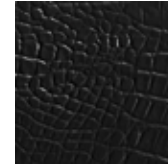
vintage blue K2



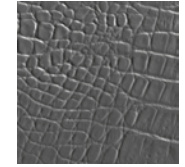
vintage wine K7



vintage ice K8



black alligator 49



grey alligator 50



pebble black N1



slate grey N2



peacock blue N3



mulberry N4



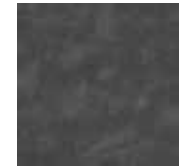
cognac N5



sage green N6



black pearl P1



grey pearl P2



brown pearl P3



beige pearl P4



cognac pearl P5



green pearl P6



yellow pearl P7



red pearl P8



pink pearl P9

VAK KAPPERS

De Marowijne 11b | 1689AR Zwaag | Info@vakkappers.nl | 085-877 0258